

CONTAINER SPECIFICATIONS



STANDARD 20'

INSIDE LENGTH	19' 4"	5.900m
INSIDE WIDTH	7' 8"	2.350m
INSIDE HEIGHT	7' 10"	2.393m
DOOR WIDTH	7' 8"	2.342m
DOOR HEIGHT	7' 6"	2.280m
CAPACITY	1,172ft ³	33.2m ³
TARE WEIGHT	4,916lb	2,230kg



STANDARD 40'

INSIDE LENGTH	39' 5"	12.036m
INSIDE WIDTH	7' 8"	2.350m
INSIDE HEIGHT	7' 10"	2.392m
DOOR WIDTH	7' 8"	2.340m
DOOR HEIGHT	7' 6"	2.280m
CAPACITY	2,390ft ³	66.7m ³
TARE WEIGHT	8,160lb	3,700kg



HIGH CUBE 40'

INSIDE LENGTH	39' 5"	12.036m
INSIDE WIDTH	7' 8"	2.350m
INSIDE HEIGHT	8' 10"	2.697m
DOOR WIDTH	7' 8"	2.338m
DOOR HEIGHT	8' 5"	2.585m
CAPACITY	2,694ft ³	76.3m ³
TARE WEIGHT	8,750lb	3,970kg



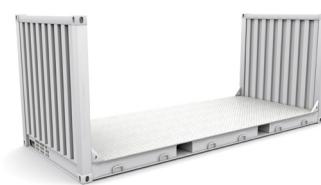
STANDARD REEFER 20'

INSIDE LENGTH	17' 8"	5.425m
INSIDE WIDTH	7' 5"	2.275m
INSIDE HEIGHT	7' 5"	2.260m
DOOR WIDTH	7' 5"	2.258m
DOOR HEIGHT	7' 3"	2.216m
CAPACITY	1,000ft ³	28.3m ³
TARE WEIGHT	7,040lb	3,200kg



STANDARD REEFER 40'

INSIDE LENGTH	37' 8"	11.493m
INSIDE WIDTH	7' 5"	2.270m
INSIDE HEIGHT	7' 2"	2.197m
DOOR WIDTH	7' 5"	2.282m
DOOR HEIGHT	7' 10"	2.155m
CAPACITY	2,040ft ³	57.8m ³
TARE WEIGHT	10,780lb	4,900kg



FLAT RACK 20'

INSIDE LENGTH	19' 6"	5.620m
INSIDE WIDTH	7' 5"	2.208m
INSIDE HEIGHT	6' 9"	2.500m
DOOR WIDTH	-	-
DOOR HEIGHT	-	-
CAPACITY	-	-
TARE WEIGHT	6,061lb	2,750kg



OPEN TOP 20'

INSIDE LENGTH	19' 4"	5.894m
INSIDE WIDTH	7' 7"	2.311m
INSIDE HEIGHT	7' 8"	2.354m
DOOR WIDTH	7' 6"	2.286m
DOOR HEIGHT	7' 2"	2.184m
CAPACITY	1,136ft ³	32.23m ³
TARE WEIGHT	5,280lb	2,400kg



OPEN TOP 40'

INSIDE LENGTH	39' 5"	12.028m
INSIDE WIDTH	7' 8"	2.350m
INSIDE HEIGHT	7' 8"	2.345m
DOOR WIDTH	7' 8"	2.341m
DOOR HEIGHT	7' 5"	2.274m
CAPACITY	2,350ft ³	66.5m ³
TARE WEIGHT	8,490lb	3,850kg



FLAT RACK 40'

INSIDE LENGTH	39' 7"	12.080m
INSIDE WIDTH	6' 10"	2.438m
INSIDE HEIGHT	6' 5"	2.103m
DOOR WIDTH	-	-
DOOR HEIGHT	-	-
CAPACITY	-	-
TARE WEIGHT	12,081lb	5,480kg

SHIP LIKE A PRO CALL 855-DEMANKO

EMAIL drayage@demanko.com WEB demanko.com